

## Active Recombinant E.coli RNase III

**Cat. No.** RNase III-06E    **Lot. No.** (See product label)

### SPECIFICATION

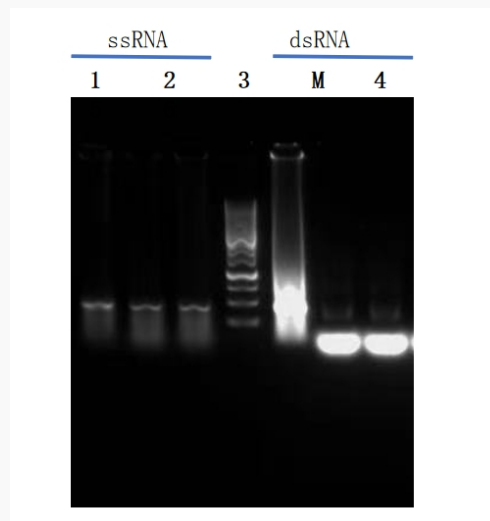
<b>Product Overview</b>	RNase III is expressed in E.coli and is derived from the RNase III gene of E.coli. DNA Exonuclease Activity: Negative Abnormal DNase activity: Negative RNase Activity: Negative Residual Host Cell Protein: <50 ppm Residual Host Cell DNA: <100 pg/mg
<b>Species</b>	E.coli
<b>Source</b>	E.coli
<b>Description</b>	It is a double-stranded RNA (dsRNA)-specific exonuclease that can cleave dsRNA into 12–15 bp dsRNA fragments with 2-3 nucleotide 3'-overhangs, 5'-phosphates, and 3'-hydroxyl termini.
<b>Purity</b>	≥ 95% by SDS-PAGE
<b>Bio-activity</b>	≥ 2 U/μL
<b>Advantages</b>	1. It specifically degrades dsRNA. 2. It has strong activity and high stability. 3. When a performance comparison is made between our product and those of well-known brands, the test results are consistent.
<b>Unit definition</b>	1 U is defined as the amount of enzyme required to completely degrade 1 μg of dsRNA at 37 centigrade within 60 minutes.
<b>Usage</b>	1. It is recommended to carry out the reaction according to the following reaction system: dsRNA: 15 μg 10 × RNase III Reaction Buffer: 5 μL Recombinant RNase III:

 Tel: 1-631-559-9269    1-516-512-3133

 Email: [info@creative-biomart.com](mailto:info@creative-biomart.com)     Fax: 1-631-938-8127

 45-1 Ramsey Road, Shirley, NY 11967, USA

	15 U Water: Up to 50 $\mu$ L 2. Incubate at 37 centigrade for 0.5 to 1 hour.
<b>Applications</b>	1. Removal of dsRNA 2. Provision of siRNA 3. Target confirmation
<b>Note</b>	1. Try to avoid freeze-thaw cycles of this product after receipt; 2. Please wear lab coat and disposable gloves when using; 3. This product should not be used directly for clinical diagnosis and treatment.
<b>Stability</b>	This product should be stored at -20 centigrade and can be stored for at least 12 months.
<b>Storage</b>	Store at -20 centigrade.
<b>Storage Buffer</b>	20 mM Tris-HCl, 500 mM NaCl, 0.5 mM EDTA, 0.5 mM DTT, 50% Glycerol, pH8.0
<b>Shipping</b>	Dry Ice

**PAGE**


Comparative tests of digesting different types of RNA Lane 1: Control, without

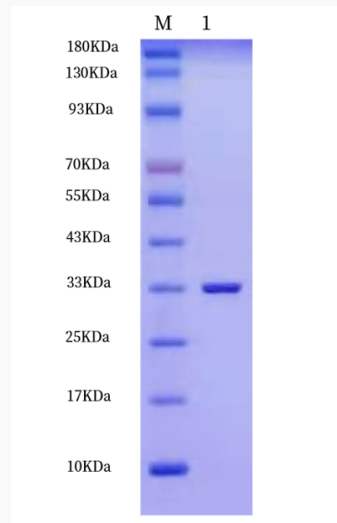
 Tel: 1-631-559-9269 1-516-512-3133

 Email: [info@creative-biomart.com](mailto:info@creative-biomart.com)  Fax: 1-631-938-8127

 45-1 Ramsey Road, Shirley, NY 11967, USA

enzyme; Lane 2: Our RNase III; Lane 3: RNase III of a well-known brand; Lane 4: Control, without enzyme; Lane 5: Our RNase III; Lane 6: RNase III of a well-known brand

**SDS-PAGE**



M: Marker Lane 1: Recombinant RNase III

 Tel: 1-631-559-9269 1-516-512-3133

 Email: [info@creative-biomart.com](mailto:info@creative-biomart.com)  Fax: 1-631-938-8127

 45-1 Ramsey Road, Shirley, NY 11967, USA